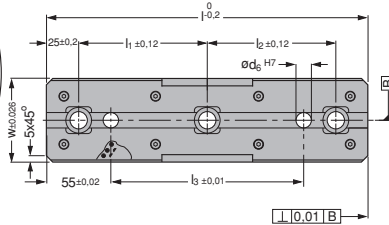
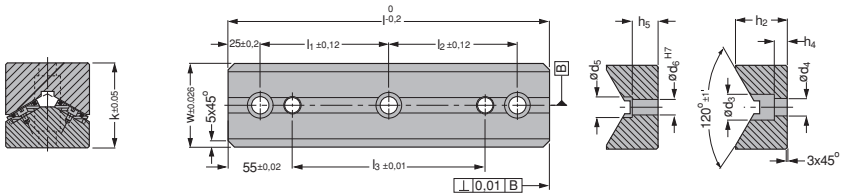


G240-01 "V" Block



G241-01 "U" Block



GSB CODE:G240-01

Code	w	l	l ₁	l ₂	l ₃	h	h ₁	t	d ₁	d ₂	d ₆	k	Screw-Pin
G240-01-065-150	65	150	-	100	45	51,05	35,5	15,5	20	13,5	12	65	2 - 2
G240-01-065-200	65	200	-	150	95	51,05	35,5	15,5	20	13,5	12	65	2 - 2
G240-01-065-250	65	250	100	100	145	51,05	35,5	15,5	20	13,5	12	65	3 - 2
G240-01-065-300	65	300	125	125	195	51,05	35,5	15,5	20	13,5	12	65	3 - 2
G240-01-125-150	125	150	-	100	45	63,93	46	15	26	17,5	16	85	2 - 2
G240-01-125-200	125	200	-	150	95	63,93	46	15	26	17,5	16	85	2 - 2
G240-01-125-250	125	250	100	100	145	63,93	46	15	26	17,5	16	85	3 - 2
G240-01-125-300	125	300	125	125	195	63,93	46	15	26	17,5	16	85	3 - 2

GSB CODE:G241-01

Code	w	l	l ₁	l ₂	l ₃	h ₂	h ₄	h ₅	d ₃	d ₄	d ₅	d ₆	k	Screw-Pin
G241-01-065-150	65	150	-	100	45	31,5	7	15	20	13,5	14	12	65	2 - 2
G241-01-065-200	65	200	-	150	95	31,5	7	15	20	13,5	14	12	65	2 - 2
G241-01-065-250	65	250	100	100	145	31,5	7	15	20	13,5	14	12	65	3 - 2
G241-01-065-300	65	300	125	125	195	31,5	7	15	20	13,5	14	12	65	3 - 2
G241-01-125-150	125	150	-	100	45	55	10	24	26	17,5	18	16	85	2 - 2
G241-01-125-200	125	200	-	150	95	55	10	24	26	17,5	18	16	85	2 - 2
G241-01-125-250	125	250	100	100	145	55	10	24	26	17,5	18	16	85	3 - 2
G241-01-125-300	125	300	125	125	195	55	10	24	26	17,5	18	16	85	3 - 2

G240-01

Replaceable Wear Plate Material
Bronze with non-liquid Lubricant

G241-01

Material
1.0503 (CK45)

HRC 56 - 60
Depth ≥ 1.0 mm

Tolerance between screw holes ±0.2 . Tolerance between dowel holes ±0,01.

Patent pending.

G242-01 / G243-01

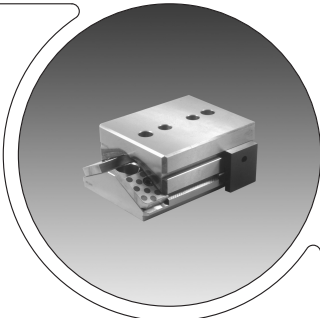
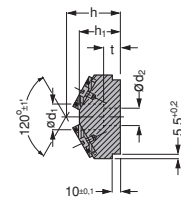
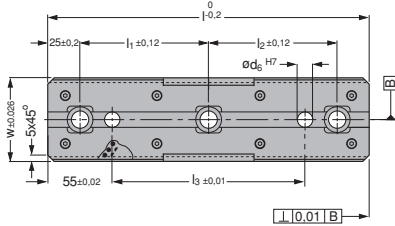
Değiştirilebilir Plakalı "V" Blok Setleri

"V" Drivers with replaceable insert with positive return

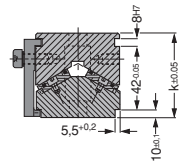
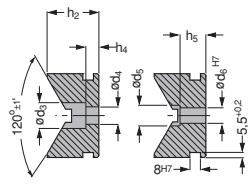
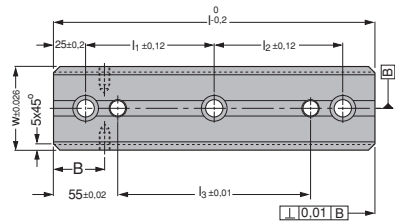
"V" Blok Sets Mit Wechselbaren Gleitplatten



G242-01 "V" Block



G243-01 "U" Block



GSB CODE:G242-01

Code	w	l	l ₁	l ₂	l ₃	h	h ₁	t	d ₁	d ₂	d ₆	k	Screw-Pin
G242-01-065-150	65	150	-	100	45	51,05	35,5	15,5	20	13,5	12	65	2 - 2
G242-01-065-200	65	200	-	150	95	51,05	35,5	15,5	20	13,5	12	65	2 - 2
G242-01-065-250	65	250	100	100	145	51,05	35,5	15,5	20	13,5	12	65	3 - 2
G242-01-065-300	65	300	125	125	195	51,05	35,5	15,5	20	13,5	12	65	3 - 2
G242-01-125-150	125	150	-	100	45	63,93	46	15	26	17,5	16	85	2 - 2
G242-01-125-200	125	200	-	150	95	63,93	46	15	26	17,5	16	85	2 - 2
G242-01-125-250	125	250	100	100	145	63,93	46	15	26	17,5	16	85	3 - 2
G242-01-125-300	125	300	125	125	195	63,93	46	15	26	17,5	16	85	3 - 2

GSB CODE:G243-01

Code	w	l	l ₁	l ₂	l ₃	h ₂	h ₄	h ₅	d ₃	d ₄	d ₅	d ₆	k	Screw-Pin
G243-01-0615-B	65	150	-	100	45	31,5	7	15	20	13,5	14	12	65	2 - 2
G243-01-0620-B	65	200	-	150	95	31,5	7	15	20	13,5	14	12	65	2 - 2
G243-01-0625-B	65	250	100	100	145	31,5	7	15	20	13,5	14	12	65	3 - 2
G243-01-0630-B	65	300	125	125	195	31,5	7	15	20	13,5	14	12	65	3 - 2
G243-01-1215-B	125	150	-	100	45	55	10	24	26	17,5	18	16	85	2 - 2
G243-01-1220-B	125	200	-	150	95	55	10	24	26	17,5	18	16	85	2 - 2
G243-01-1225-B	125	250	100	100	145	55	10	24	26	17,5	18	16	85	3 - 2
G243-01-1230-B	125	300	125	125	195	55	10	24	26	17,5	18	16	85	3 - 2

G242-01

Replaceable Wear Plate Material
Bronze with non-liquid Lubricant

G243-01

Material
1.0503 (CK45)

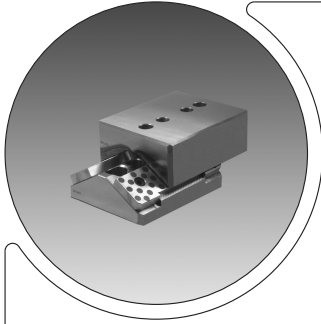
HRC 56 - 60
Depth ≥ 1.0 mm

Tolerance between screw holes ±0.2 . Tolerance between dowel holes ±0,01.

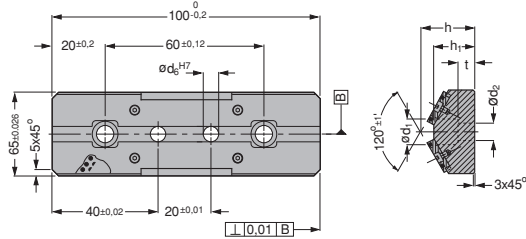
"B" dimension is given by the customer.

Positive return clamp not included.

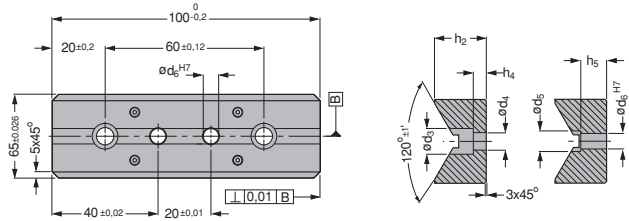
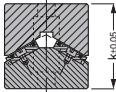
Patent pending.



G247-01 "V" Block



G248-01 "U" Block



GSB CODE:G247-01

Code	h	h ₁	t	d ₁	d ₂	d ₆	k	Screw-Pin
G247-01-065-100	51,05	35,5	15,5	17,5	11	10	65	2 - 2

G247-01
Replaceable Wear Plate Material
Bronze with non-liquid Lubricant

G248-01
Material
1.0503 (CK45)

HRC 56 - 60
Depth ≥ 1.0 mm

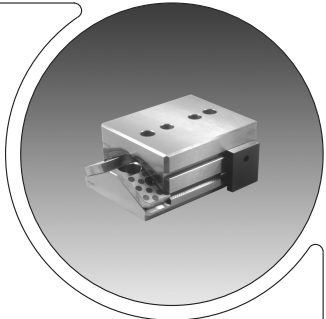
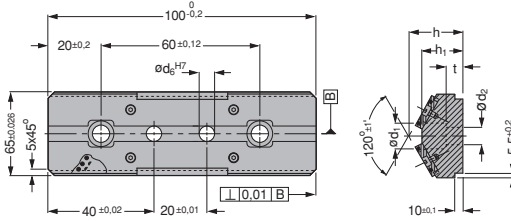
Tolerance between screw holes ±0.2 . Tolerance between dowel holes ±0,01.

Patent pending.

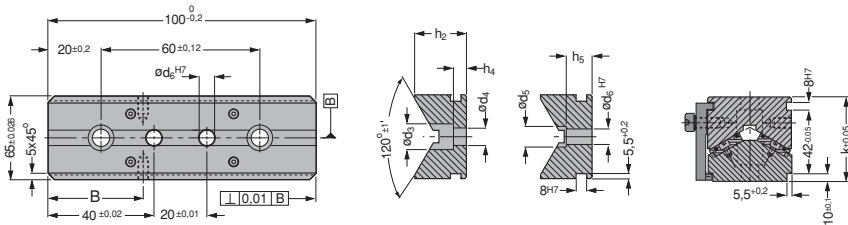
GSB CODE:G248-01

Code	h ₂	h ₄	h ₅	d ₃	d ₄	d ₅	d ₆	k	Screw-Pin
G248-01-065-100	31,5	7	15	17,5	11	12	10	65	2 - 2

G249-01 "V" Block



G250-01 "U" Block



GSB CODE:G249-01

Code	h	h ₁	t	d ₁	d ₂	d ₆	k	Screw-Pin
G249-01-065-100	51,05	35,5	15,5	17,5	11	10	65	2 - 2

GSB CODE:G250-01

Code	h ₂	h ₄	h ₅	d ₃	d ₄	d ₅	d ₆	k	Screw-Pin
G250-01-0610-B	31,5	7	15	17,5	11	12	10	65	2 - 2

G249-01
Replaceable Wear Plate Material
 Bronze with non-liquid Lubricant

G250-01
Material
 1.0503 (CK45)

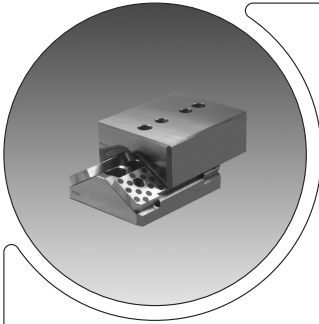
HRC 56 - 60
 Depth ≥ 1.0 mm

Tolerance between screw holes ±0.2 . Tolerance between dowel holes ±0,01.

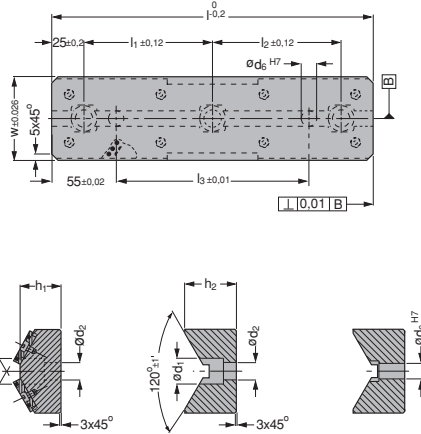
"B" dimension is given by the customer.

Positive return clamp not included.

Patent pending.



G244-01 “V” Driver Set



GSB CODE:G244-01

Code	w	l	l ₁	l ₂	l ₃	h ₁	h ₂	d ₁	d ₂	d ₆	k	Screw-Pin
G244-01-065-150	65	150	-	100	45	35,5	31,5	20	13,5	12	65	2 - 2
G244-01-065-200	65	200	-	150	95	35,5	31,5	20	13,5	12	65	2 - 2
G244-01-065-250	65	250	100	100	145	35,5	31,5	20	13,5	12	65	3 - 2
G244-01-065-300	65	300	125	125	195	35,5	31,5	20	13,5	12	65	3 - 2
G244-01-125-150	125	150	-	100	45	46	55	26	17,5	16	85	2 - 2
G244-01-125-200	125	200	-	150	95	46	55	26	17,5	16	85	2 - 2
G244-01-125-250	125	250	100	100	145	46	55	26	17,5	16	85	3 - 2
G244-01-125-300	125	300	125	125	195	46	55	26	17,5	16	85	3 - 2

G244-01 Replaceable Wear Plate Material
Bronze with non-liquid Lubricant

Tolerance between screw holes $\pm 0,2$. Tolerance between dowel holes $\pm 0,01$.

Patent pending.

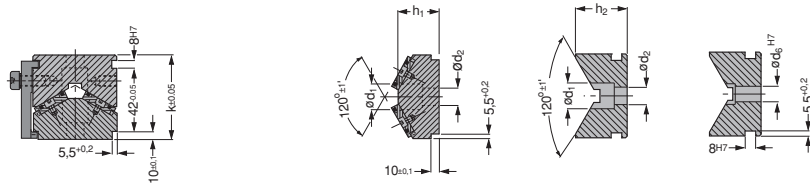
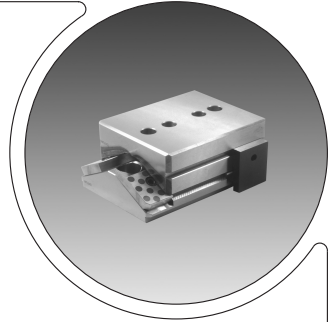
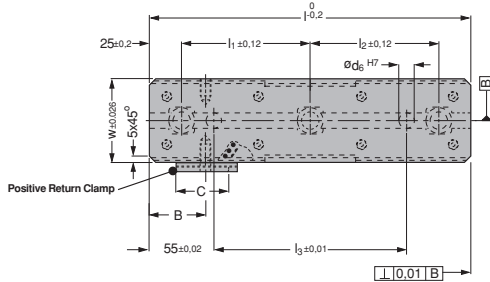
G245-01

Değiştirilebilir Plakalı "V" Blok Setleri

"V" Drivers with replaceable insert with positive return

"V" Blok Sets Mit Wechselbaren Gleitplatten

G245-01 "V" Driver Set



GSB CODE:G245-01

Code	w	l	l ₁	l ₂	l ₃	h ₁	h ₂	d ₁	d ₂	d ₆	k	Screws-Pin
G245-01-0615 -BC	65	150	-	100	45	35,5	31,5	20	13,5	12	65	2 - 2
G245-01-0620 -BC	65	200	-	150	95	35,5	31,5	20	13,5	12	65	2 - 2
G245-01-0625 -BC	65	250	100	100	145	35,5	31,5	20	13,5	12	65	3 - 2
G245-01-0630 -BC	65	300	125	125	195	35,5	31,5	20	13,5	12	65	3 - 2
G245-01-1215 -BC	125	150	-	100	45	46	55	26	17,5	16	85	2 - 2
G245-01-1220 -BC	125	200	-	150	95	46	55	26	17,5	16	85	2 - 2
G245-01-1225 -BC	125	250	100	100	145	46	55	26	17,5	16	85	3 - 2
G245-01-1230 -BC	125	300	125	125	195	46	55	26	17,5	16	85	3 - 2

G245-01

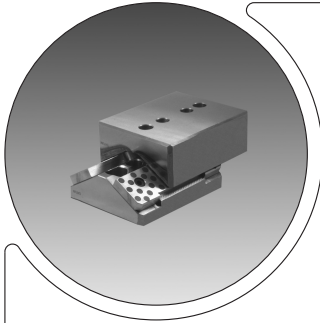
Replaceable Wear Plate Material
Bronze with non-liquid Lubricant

Tolerance between screw holes ±0.2 . Tolerance between dowel holes ±0,01.

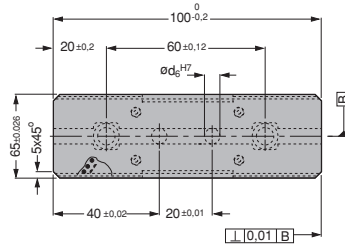
"B" and "C" dimension is given by the customer.

Two Positive return clamp supplied with each "V" Driver Set.

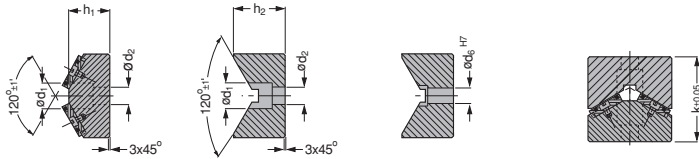
Patent pending.



G251-01 “V” Driver Set



G251-01 “V” Driver Sets



GSB CODE:G251-01

Code	h ₁	h ₂	d ₁	d ₂	d ₆	k	Screw-Pin
G251-01-065-100	35,5	31,5	17,5	11	10	65	2 - 2

G251-01

Replaceable Wear Plate Material
Bronze with non-liquid Lubricant

Tolerance between screw holes
±0.2 . Tolerance between dowel
holes ±0,01.

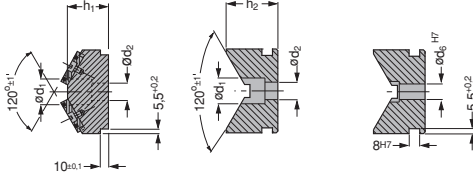
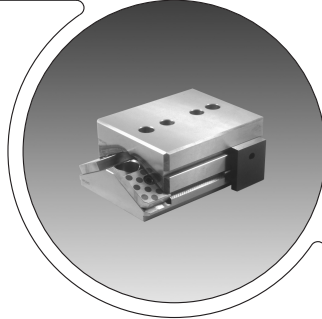
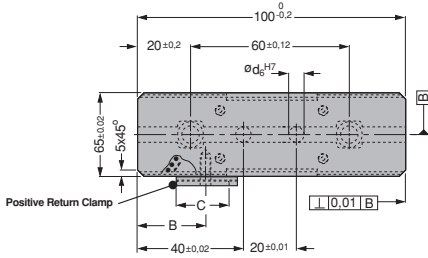
Patent pending.

G252-01

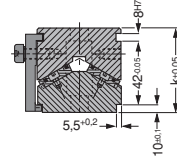
Değiştirilebilir Plakalı “V” Blok Setleri
“V” Driver Sets with replaceable insert with positive return
“V” Blok Sets Mit Wechselbaren Gleitplatten



G252-01 “V” Driver Set



G252-01 “V” Driver Sets



GSB CODE:G252-01

Code	h_1	h_2	d_1	d_2	d_6	k	Screws-Pin
G252-01-0610 -BC	35.5	31.5	17,5	11	10	65	2 - 2

G252-01
Replaceable Wear Plate Material
Bronze with non-liquid Lubricant

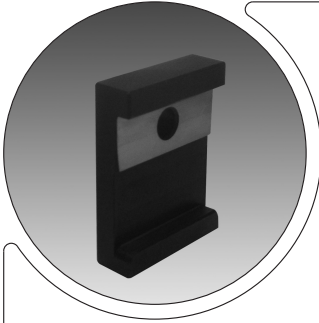
Tolerance between screw holes ±0.2 . Tolerance between dowel holes ±0,01.

“B” and “C” dimension is given by the customer.

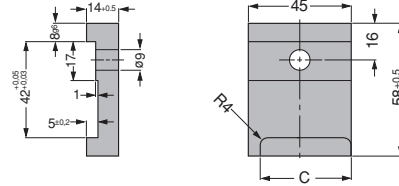
Two Positive return clamp supplied with each “V” Driver Set.

Patent pending.

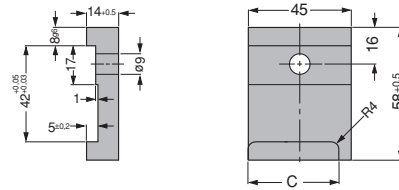
Kendinden Yağlı Geri Dönüş Plakaları
Positive Return Clamp for V Drives with graphite
Positive rendite Klemme Für "V" Bloks Mit Festschmierstoff



Right



Left



GSB CODE:G234-03

Code	Location
G234-03-045-C	Set Both Sides
G234-03-045L-C	Left
G234-03-045R-C	Right

**G234-03
Material**
1.2343 or 1.2344

Hardened and nitrided
HRC 40 + 5

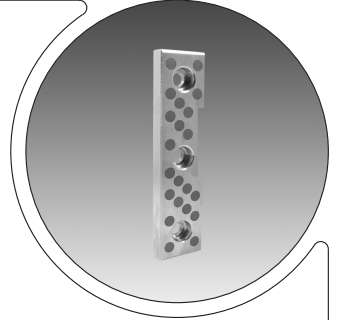
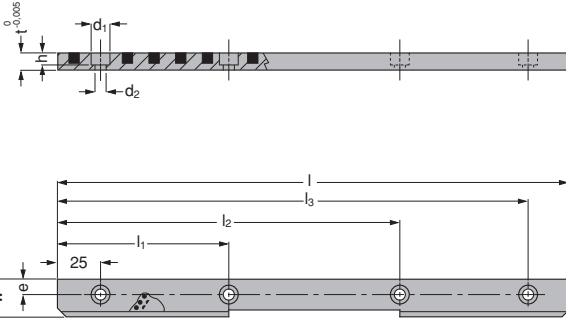
"C" dimension is given by the customer.

G246-01

Kendinden Yağlı Değişirilebilir Sürtünme Plakaları
 Replaceable Wear Plate, self-lubricating
 Abwedselbaren Gleitplatten Mit Festschmierstoff



G246-01 "V" Driver Set



GSB CODE:G246-01

Code	w	l	l ₁	l ₂	l ₃	t	h	e	d ₁	d ₂
G246-01-065-100	22	100	-	-	75	10	7	9	11	6,5
G246-01-065-150	22	150	75	-	125	10	7	9	11	6,5
G246-01-065-200	22	200	75	125	175	10	7	9	11	6,5
G246-01-065-250	22	250	100	150	225	10	7	9	11	6,5
G246-01-065-300	22	300	100	200	275	10	7	9	11	6,5
G246-01-125-150	50	150	75	-	125	12	9	22	14	9
G246-01-125-200	50	200	75	125	175	12	9	22	14	9
G246-01-125-250	50	250	100	150	225	12	9	22	14	9
G246-01-125-300	50	300	100	200	275	12	9	22	14	9

G246-01

Replaceable Wear Plate Material
 Bronze with non-liquid Lubricant

Patent pending.